

PRODUCT DISPLAY

the display collection



Ensure your products are displayed in the best possible way and they will sell themselves! Choose from a wide range of dynamic shelving and display options to maximise your sales.



Product display



Acrylic cubes and boxes, with or without lids - a dynamic way to display products.



Flat shelves, sloping shelves, narrow shelves under posters, framed displays. Any way you want to display your products, we can help.



Shelving for use with cable/rod systems

Drilled and slotted shelves - use with 1.5mm cables



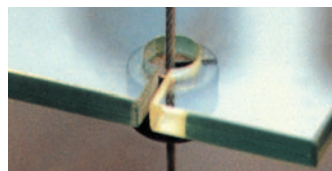
- 6mm toughened safety glass

330mm depth

Item Code:	Shelf Size (mm):	Cable centre (mm):	Price £:
391330	391w x 330d	For A3 cable centres	331w x 300d 16.80
514330	514w x 330d	For A2 cable centres	454w x 300d 18.35
688330	688w x 330d	For A1 cable centres	628w x 300d 21.70

180mm depth

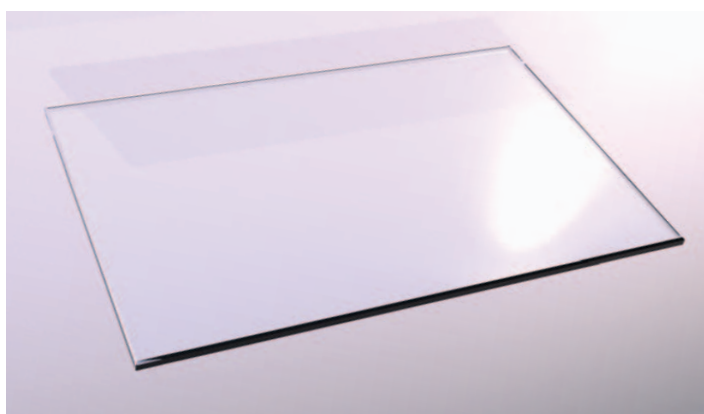
Item Code:	Shelf Size (mm):	Cable centre (mm):	Price £:
688180	688w x 180d	For A1 cable centres	628w x 150d 16.80



Time saving tip

Use drilled and slotted shelves with CS01 – shelves can be removed for cleaning without using any tools

Plain shelves - use with cable or rod systems



- 6mm toughened safety glass

330mm depth

Item Code:	Shelf Size (mm):	Cable centre (mm):	Price £:
618330	618w x 330d	For A1 cable centres	628w x 300d 16.80

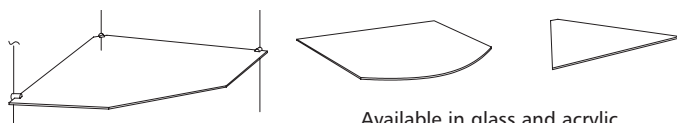


KS2A1



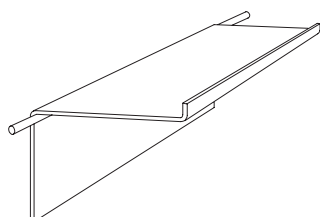
KWS2A1

Special shapes & sizes available on request



Available in glass and acrylic

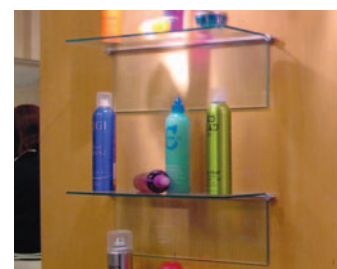
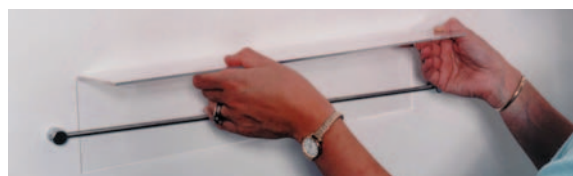
Flat shelf with lip For use on wall-mounted rods



Use as a group to make a feature or use under an A2 pocket to create a powerful wall display with graphics and product.

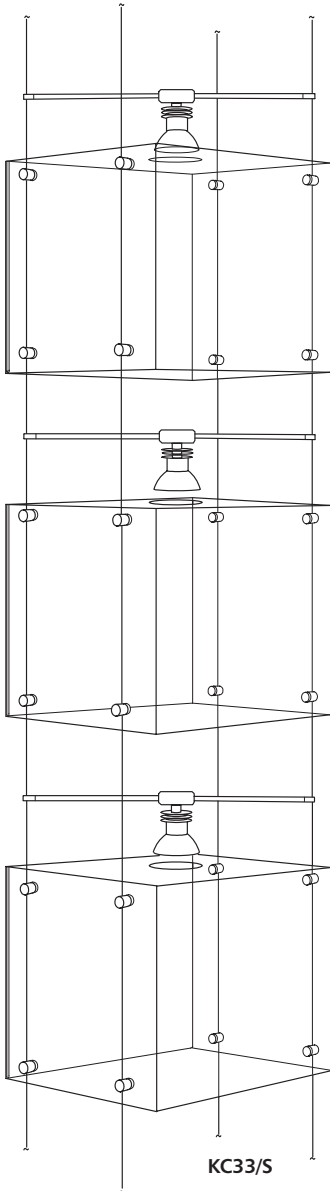
- 2mm thick acrylic
- shelf is 448mm wide x 120mm deep with a 10mm lip and a 100mm drop back

Item Code:	Size:	Price £:
HA2-93	A2	17.25
For use with RS03		
HA2-103	A2	17.25
For use with WM11		



Acrylic display cubes

Standard cube kits



Acrylic cubes suspended from the cables create powerful semi-secure presentations. The low-voltage lighting greatly increases the impact of the display and will help to increase sales.

Dimensions: 300 h x 300 w x 250 d (150mm cable centres)

Cubes are in 3mm thick acrylic, with option of 2mm thick 'U' shaped back pocket for graphics. Clear front and satin side and top. Removable lid with hole for lighting.

Included in standard cube kits

- 3 x Display Cubes
- 4 x CA4 1.5mm dia. Cables
- 24 x CS13/C Panel Support to take 3mm material
- 3 x LM64C Straight light mini-lamp head for 348mm diagonal centres supplied with 20 watt - 35mm dia. lamps
- 1 x LT60-12 Transformer
- 2 x CS08 Power Connectors
- 4 x PC01/1 Top Isolators
- 4 x SP/IS Bottom Isolators

Item Code:	Description:	Price £:
KC33/S	Satin acrylic without pocket	525.50
KC33-P/S	Satin acrylic with pocket	558.50



Low voltage straight lights (20 watt max) are supplied with all our cube kits. Position them diagonally between cables

Cubes can be placed side by side sharing a pair of cables. Only use 3 lights per pair of diagonal cables



Cubes can be suspended on cables or rods. Ask about customised cube displays, including security features, integrated graphics and lighting

Trade and volume discounts are available - please ask

Component measurements

All measurements are in millimetres unless stated

L=Length W=Width H=Height Ø=Diameter D=Depth Int=Internal

Item code:	Allen key:	Dimensions:	Item code:	Allen key:	Dimensions:	Item code:	Allen key:	Dimensions:
AC		W=19; H=11.5	CS12-3	●●	H=27; D=26; Ø=16	RG23	●●	L=46; Ø=18
ACD		W=28; H=11	CS13	●●	L=21.5; Ø=16	RG23-10	●●●	L=50; Ø=18
ACL		W=19; H=11.5	CS13-3	●●	L=23.5; Ø=16	RGN01	●	L=25; Ø=16
C2		2m cable; top fitting Ø=16	CS21	●●	L=64; Ø=16	RH01	●	L=19; Ø=16
C2A4F	●●	Top fitting Ø=18; floor fitting Ø=15	CS21-3	●●	L=64; Ø=16	RH01-10	●	L=23; Ø=18
C2CW-15	●●	Wall brackets Ø=38; 40mm from wall to back cable; floor fitting Ø=16	CS22	●	H=28; D=21.2; Ø=16	RH02	●	L=24; Ø=16
C2CW-30	●●	Wall brackets Ø=38; 40mm from wall to back cable; floor fitting Ø=16	CS23	●●	L=35; Ø=16	RH02-10	●	L=28; Ø=18
C2WF-15	●●	Wall brackets Ø=38; 40mm from wall to back cable; floor fitting Ø=15	CS23-3	●●	L=37; Ø=16	RP	●	Ø=18
C2WF-30	●●	Wall brackets Ø=38; 40mm from wall to back cable; floor fitting Ø=15	CWF	●	3m cable; projects 40 from wall; floor fitting Ø=15	RPA	●●	Ø=15
C2WW-15	●●	Wall brackets Ø=38; 40mm from wall to back cable	CWW	●	3m cable; projects 40 from wall; fitting plate Ø=38	RR01	●●	L=31; Ø=16
C2WW-30	●●	Wall brackets Ø=38; 40mm from wall to back cable	HDS		D=15; Ø=50	RR01-10	●●	L=40; Ø=18
CA4	●	4m cable; top fitting Ø=16; bottom fitting Ø=15	HR10-3	●	L=790; Ø=10	RR01-3/10	●●●	L=33; Ø=18
CA4-3	●	Top fitting Ø=16; bottom fitting Ø=15	KC2-CG05	●●	Top fitting Ø=16; support Ø=23	RR01-3/6	●●●	L=29; Ø=16
CAA	●●	4m cable; fittings Ø=38	KC2-CG05-10	●●	Top fitting Ø=16;	RR01-6/10	●●	L=56; Ø=18
CAF	●●	4m cable; top bracket Ø=38; floor fitting Ø=15	KMDB/SI	●	H=350; D=350; cables/rods project 40mm & 340mm from wall	RS		Ø=18
CAT	●	Weight 100H x 30Ø; weighs 0.55kg	KMSB-25/SI		H=30; Ø=35; cable fitting 25mm from wall	RS01	●	D=11; Ø=16
CCT	●	Weight 100H x 30Ø; weighs 0.55kg	KMSB/SI		H=60; Ø=60; cable fitting 50mm from wall	RS03	●●	L=17.5; Int Ø=12; Int D=6; Ø=16
CCW	●	3m cable; top fitting Ø=16; projects 40 from wall	KMSB-100/SI		H=110; Ø=110; cable fitting 100mm from wall	RS03-10	●●	L=22; Ø=18
CD-4	●	W=5; Ø=25	P01		Ø=38	RS04	●●	L=21; Int Ø=12; Int D=6; Ø=16
CD-10	●	W=5; Ø=25	P01-PC01		H=15; Ø=38	RS04-10	●●	L=26; Ø=18
CG01	●	L=20; Ø=16	P02		Ø=12; D=6	RS05	●●	L=17; Ø=16
CG01-3	●●	L=21; Ø=16	P08	●	H=8; Ø=16	RS05-10	●●	L=22; Ø=18
CG02	●	L=32; Ø=16	PC01/I		L=12; Ø=16	RS06	●●	L=20; Ø=16
CG03	●	L=15; Ø=10	PC31		L=18	RS06-10	●●	L=26; Ø=18
CG03-3	●	L=15; Ø=10	PR01-I		L=12; Ø=16	RS08	●●	L=18; Ø=16
CG04	●	L=22; Ø=10	R1000-10		L=1000; Ø=10	RS-10	●	L=22; Ø=20
CG04-3	●	L=22; Ø=10	R1000P		L=1000; Ø=6	RS11	●●	L=39; Ø=16
CG06	●	L=20; Ø=16	R1500		L=1500; Ø=6	RS11-10	●●	L=43; Ø=18
CG07	●	L=32; Ø=16	R1500-10		L=1500; Ø=10	RS12	●	H=28; D=18.1; Ø=16
CG08	●	L=31; Ø=21; 8.5mm Ø hole required 15mm from edge of panel	R500		L=500; Ø=6	RS12-10	●●	L=20; Ø=18
CG09	●	L=22; Ø=16	R500-10		L=500; Ø=10	RS13	●●	L=25; Ø=16
CG11	●●	L=27; Ø=16	R500P		L=500; Ø=6	RS13-10	●	L=30; Ø=18
CG11-3	●●●	L=28; Ø=16	RAAS	●●	Top fitting Ø=15; bottom fitting Ø=18	RS21	●●	L=64; Ø=16
CG12	●●	L=30; Ø=18	RAS	●	Top & bottom fitting Ø=18	RS21-10	●●	L=68; Ø=18
CG12-3	●●●	L=31; Ø=18	RAS-10		Top fitting Ø=20; Bottom fitting Ø=22	RS22	●●	L=30; D=24.2; Ø=16
CG13	●●	L=27; Ø=18	RB1		1m rod; top fitting Ø=16	RS23	●●	L=38; Ø=16
CG13-3	●●●	L=28; Ø=18	RB2		2m rod; top fitting Ø=16	RS23-10	●	L=38; Ø=18
CG14	●	L=20; Ø=20.5	RB3		3m rod; top fitting Ø=16	RSA	●	Ø=15
CG14-3	●●	L=21; Ø=20.5	RBCF3		3m rod; top fitting Ø=16; bottom fitting Ø=15	WM01	●●	L=30
CG15	●	L=20; Ø=20.5	RBT1		1m rod; top fitting Ø=16	WM02	●●	L=30
CG15-3	●●	L=20.5; Ø=21	RBT2		2m rod; top fitting Ø=16	WM03	●	L=16
CG21	●●	L=46; Ø=16	RBT3		3m rod; top fitting Ø=16	WM04	●	L=16
CG21-3	●●●	L=46; Ø=16	RBTf3		3m rod; top fitting Ø=16; bottom fitting Ø=15	WM05-13	●	L=25; Ø=16
CG22	●●	L=52; Ø=18	RC10-6	●	L=25; Ø=10	WM05L-20	●	L=40; Ø=16
CG22-3	●●●	L=52; Ø=18	REC	●	L=16; Ø=12	WM06		L=19; Ø=16
CG23	●●	L=46; Ø=18	REC-10		L=15; Ø=10	WM07	●	L=28; Ø=16
CG23-3	●●●	L=46; Ø=18	REC-P/BL		L=17; Ø=8.5	WM08	●	L=32; Ø=16
CH01	●	L=16; Ø=16	RG01	●	L=25; Ø=16	WM09	●●	L=31; Ø=16
CH01-3	●	L=17; Ø=16	RG01-10	●●	L=29; Ø=18	WM10	●	L=39; Ø=16; 24mm from wall
CH02	●	L=24; Ø=16	RG02	●	L=36; Ø=16	WM11	●●	L=31; Ø=16
CH02-3	●	L=24; Ø=16	RG02-10	●●	L=40; Ø=18	WM11-10	●●	L=36; Ø=18
CQQ	●	2m Cable; top and bottom fitting Ø=16	RG05	●●	L=16; Ø=16	WM11L-10	●●	L=59; Ø=18
CS01	●	D=11; Ø=16	RG06	●●	L=25; Ø=16	WM12	●	L=20; Ø=12
CS01-3	●	D=11; Ø=16	RG06-10	●●	L=29; Ø=18	WM15	●	L=25; Ø=25
CS03	●●	L=14; Int Ø=12; Int D=6; Ø=16	RG07	●	L=36; Ø=16	WM16	●	L=50; Ø=25
CS03-3	●●●	L=15; Int Ø=12; Int D=6; Ø=16	RG07-10	●●	L=40; Ø=18	WM17	●	L=75; Ø=25
CS04	●●	L=20; Int Ø=12; Int D=6; Ø=16	RG11	●●	L=30; Ø=16	WM18	●	L=25; Ø=16
CS05	●●	L=14; Ø=16	RG11-10	●●●	L=34; Ø=18	WM19		Ø=16
CS05-3	●●	L=15; Ø=16	RG12	●●	L=33; Ø=18	WM20	●	Ø=25; D=5.5
CS06	●●	L=20; Ø=16	RG12-10	●●●	L=37; Ø=18	WMS-2		D=2
CS07	●●	L=28; Ø=16	RG13	●●	L=30; Ø=18	WMS-3		D=3
CS08	●●	L=12; Ø=12	RG13-10	●●●	L=34; Ø=18	ALLEN KEYS:		
CS08-3	●●	L=16; Ø=16	RG14-10	●●	L=29; Ø=20.5	To see which allen key each component requires, check the colour code in the list above against the grid below:		
CS09	●	L=17; Ø=16	RG21	●●	L=46; Ø=16	AK1.5	1.5mm	●
CS11	●●	L=36; Ø=18	RG21-10	●●●	L=68; Ø=16	AK2.0	2.0mm	●
CS11-3	●●●	L=37; Ø=18	RG22	●●	L=52; Ø=18	AK2.5	2.5mm	●
CS12	●	H=28; D=14.6; Ø=16	RG22-10	●●●	L=56; Ø=18	AK3.0	3.0mm	●
						AK4.0	4.0mm	●
						AK5.0	5.0mm	●
						AK6.0	6.0mm	●

create the perfect display for

Wall mounted...



Signage suspended from the ceiling...



Floor-to-ceiling creativity...



Versatile cable and rod systems that allow you to create exactly the display you want.

you...

Freestanding displays



Add low voltage lighting



Add movement...

and watch your sales increase



Floating multi-media presentations...



The very latest digital displays will add sound and movement to your displays...and increase sales too...

Add flexibility to your display with channel...



Incredibly slim, bright light boxes create maximum impact...



Ultra-bright, slim light boxes can be suspended or wall mounted... used on their own or combined with other displays...

