

DIGITAL DISPLAYS

the display collection



**JOHN
ELLIS**

DISPLAY EXHIBITION
& SHOP EQUIPMENT

Phones

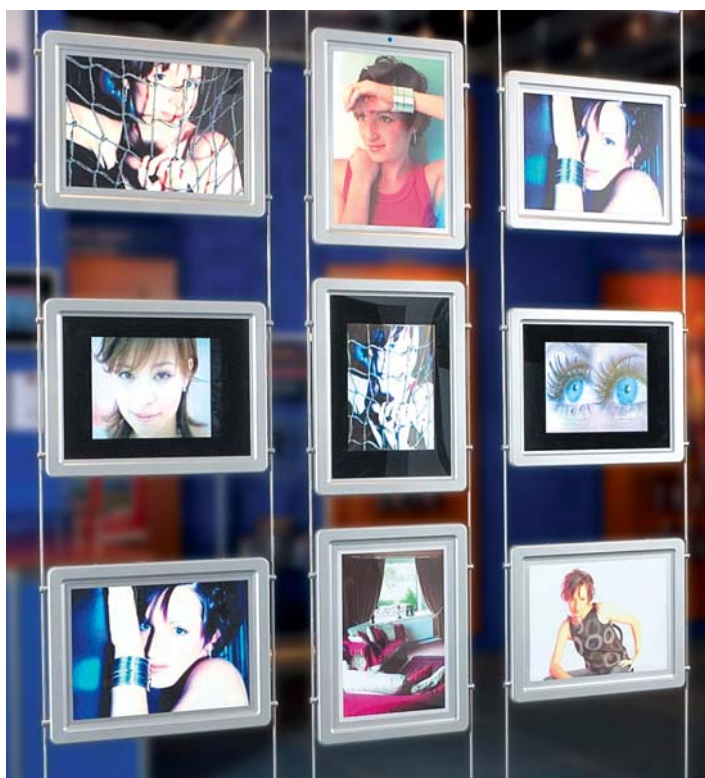


Increase the impact of any display by adding sound and moving images! Research shows sales can increase by up to 317% (source POPAI).



Digital displays

Incorporate movement into your displays and watch sales soar!



New Digital Display System is highly compact and economical, which means small as well as large companies can benefit from the advantages of digital media.

Digital Displays are the solution if you want to:

- Present jpeg images, mpeg video and sound
- Increase awareness that will increase sales
- Update your display instantly without expensive print costs
- Grab the attention of passers-by with strong sales messages

Where can Digital Display be used?

- Shop windows
- Exhibition stands
- Showrooms
- Museums
- Offices
- Banks
- Point of Sale
- Airports

Incredibly easy to use

- Ultra slim - only 53 mm in depth
- Uses compact flash card media which can be changed in seconds
- Extra bright - can be viewed from any angle

Digital displays - kits

Digital screen

- all kits are supplied with a demo compact flash card and instruction manual
- depth 53mm, 17" wide screen

Cold cathode light box

- only 25mm deep
- single and double sided options
- poster size 420mm x 297mm
- lamp life up to 50,000 hrs

Kits are supplied with 1.5mm cables with a 4 metre drop or 6mm rods with a 3m drop, transformer and power connectors. Width of display 540mm.

Installation must be carried out by a qualified installer.

See website for current prices.

Single cold cathode light box kits



- single sided or double sided light box kits
- supplied with 1.5mm cable and transformer

Item Code:	Description:	Price £:
KDCA3	Single sided	poa
KDCA3-D	Double sided	poa

Combined digital screen/light box kit



- kit comprising one single sided digital screen plus one single or double sided light box
- supplied with 6mm rods and transformer

Code:	Description:	Price £:
KD1	With single sided light box	poa
KD1-D	With double sided light box	poa

Single digital screen kit



- supplied with 1.5mm cable and transformer

Item Code:	Price £:
KDA3	poa

See website for current prices

Multiple and combination kits



- 3 cold cathode light boxes**
- supplied with 1.5mm cables and transformer

Code:	Description:	Price £:
KD2	3 x single sided light boxes	poa
KD2-D	3 x double sided light boxes	poa



- 1 digital screen, 1 cold cathode light box & 1 double A4 acrylic pocket**
- supplied with 6mm rods and transformer

Code:	Description:	Price £:
KD3	Includes 1 single sided light box, 1 digital screen & 1 double A4 pocket	poa
KD3-D	Includes 1 double sided light box, 1 digital screen & 1 double A4 pocket	poa



- 1 digital screen plus 2 cold cathode light boxes**
- supplied with 6mm rods and transformer

Code:	Description:	Price £:
KD4	Includes 2 single sided light boxes & 1 digital screen	poa
KD4-D	Includes 2 double sided light boxes & 1 digital screen	poa



- 3 digital screens**
- supplied with 6mm rods and transformer

Code:	Description:	Price £:
KD5	3 digital screens	poa

See website for current prices

Totally unique digital screens and cold cathode light boxes powered via the low-voltage cable or rod system

Digital display screen

- ultra slim 53mm depth screen which simply clips onto cable/rod system
- 17" wide LCD screen
- all the unit needs to run is a memory card with data downloaded directly from a digital camera or PC
- you can install jpeg images, mpeg video and sound files
- to load the digital screen you will need a USB card reader and a compact flash memory card.

Item Code:	Size:	Price £:
DA3	A3 17" LCD Digital Screen (60 watts/12 volt) supplied with PO2 supports and a compact demo card See website for current prices	poa

Cold cathode light boxes - suspended

Use on their own as an illuminated header with acrylic pockets underneath, a bank of three units one under the other, or as part of a display with the digital screen.

- Completely even spread of light which eliminates shadows
- Invisible power supply, no ugly power cables
- Use standard paper posters up to 90 gsm or inkjet prints
- Units are very light weight
- Extremely long lamp life of up to 50,000 hrs (approximately 5 years)
- Single or double sided options
- Poster size 420mm x 297mm. Viewing area 418mm x 296mm

Item Code:	Size:	Price £:
DCA3	A3 single sided, landscape/portrait (15 watts/12 volt) supplied with PO2 supports	poa
DCDA3	A3 double sided, landscape/portrait (15 watts/12 volt) supplied with PO2 supports See website for current prices	poa

2 x A4 acrylic pockets

- 2mm thick acrylic poster pocket supplied on special 540mm cable/rod centrals

Item Code:	Size:	Price £:
D-M2A4PW	2 x A4 pockets	11.25

Transformers

- white single-circuit transformers, supplied with 2m input lead and 1m output lead.

- provides protection against overheating, overloading and short-circuits

Item Code:	Size:	Price £:
LT100-12	100 VA For use on rods only	32.00
LT200/B	200 VA For use on rods only	50.00

Ordering checklist:

1. Cables or rods if not already fitted
2. A suitable transformer per pair of cables (see above for details)
3. Power connectors per pair cables/rods (eg CS08 for cables or RS08 for rods).
4. Four supports per screen/light box to fix to cables/rods (eg 4 x CS03 for 1.5mm cables, CS03-3 (p28) for 3mm cables/rods, RS03 for 6mm rods)
5. Isolators to fit to top and bottom



Property Displays

Guildford Road, Cranleigh
Surrey GU6 9PZ
PRICE: £475,000 Freehold
Four Bedrooms Detached Cottage, Featuring
New Fitted Kitchen, and Master Bedroom with En-Suite Bathrooms,
Large Lounge With Views to Garden

Property Displays

Horsham Lane, Cranleigh
Surrey GU6 6PZ
PRICE: £475,000 Freehold
Four Bedroom Detached Executive House, Featuring
New Fitted Kitchen, and Master Bedroom with En-Suite Bathrooms,
Large Lounge With Views to Garden

Important fitting information:

- Units can be fitted to 1.5mm or 3mm cable or 3mm or 6mm rod systems - when ordering, make sure you have the correct supports for the system you are ordering
- Cable/rod centres: Landscape: 540mm Portrait: 420mm
- One pair of 1.5mm or 3mm cables or rods will take a maximum 60 watts. This means either one digital screen or 3 light boxes. One pair of 6mm rods will take a maximum of 300 watts, so can easily take 3 digital screens
- Frame size for digital screen and light box is 520mm x 400mm

Component measurements

All measurements are in millimetres unless stated

L=Length W=Width H=Height Ø=Diameter D=Depth Int=Internal

Int=Internal

Item code:	Allen key:	Dimensions:
AC		W=19; H=11.5
ACD		W=28; H=11
ACL		W=19; H=11.5
C2		2m cable; top fitting Ø=16
C2A4F	● ●	Top fitting Ø=18; floor fitting Ø=15
C2CW-15	● ●	Wall brackets Ø=38; 40mm from wall to back cable; floor fitting Ø=16
C2CW-30	● ●	Wall brackets Ø=38; 40mm from wall to back cable; floor fitting Ø=16
C2WF-15	● ●	Wall brackets Ø=38; 40mm from wall to back cable; floor fitting Ø=15
C2WF-30	● ●	Wall brackets Ø=38; 40mm from wall to back cable; floor fitting Ø=15
C2WW-15	● ●	Wall brackets Ø=38; 40mm from wall to back cable
C2WW-30	● ●	Wall brackets Ø=38; 40mm from wall to back cable
CA4	●	4m cable; top fitting Ø=16; bottom fitting Ø=15
CA4-3	●	Top fitting Ø=16; bottom fitting Ø=15
CAA	● ●	4m cable; fittings Ø=38
CAF	● ●	4m cable; top bracket Ø=38; floor fitting Ø=15
CAT	●	Weight 100H x 30Ø; weighs 0.55kg
CCT	●	Weight 100H x 30Ø; weighs 0.55kg
CCW	●	3m cable; top fitting Ø=16; projects 40 from wall
CD-4	●	W=5; Ø=25
CD-10	●	W=5; Ø=25
CG01	●	L=20; Ø=16
CG01-3	● ●	L=21; Ø=16
CG02	●	L=32; Ø=16
CG03	●	L=15; Ø=10
CG03-3	●	L=15; Ø=10
CG04	●	L=22; Ø=10
CG04-3	●	L=22; Ø=10
CG06	●	L=20; Ø=16
CG07	●	L=32; Ø=16
CG08	●	L=31; Ø=21; 8.5mm Ø hole required 15mm from edge of panel
CG09	●	L=22; Ø=16
CG11	● ●	L=27; Ø=16
CG11-3	● ● ●	L=28; Ø=16
CG12	● ●	L=30; Ø=18
CG12-3	● ● ●	L=31; Ø=18
CG13	● ●	L=27; Ø=18
CG13-3	● ● ●	L=28; Ø=18
CG14	●	L=20; Ø=20.5
CG14-3	● ●	L=21; Ø=20.5
CG15	●	L=20; Ø=20.5
CG15-3	● ●	L=20.5; Ø=21
CG21	● ●	L=46; Ø=16
CG21-3	● ● ●	L=46; Ø=16
CG22	● ●	L=52; Ø=18
CG22-3	● ● ●	L=52; Ø=18
CG23	● ●	L=46; Ø=18
CG23-3	● ● ●	L=46; Ø=18
CH01	●	L=16; Ø=16
CH01-3	●	L=17; Ø=16
CH02	●	L=24; Ø=16
CH02-3	●	L=24; Ø=16
CQQ	●	2m Cable; top and bottom fitting Ø=16
CS01	●	D=11; Ø=16
CS01-3	●	D=11; Ø=16
CS03	● ●	L=14; Int Ø=12; Int D=6; Ø=16
CS03-3	● ● ●	L=15; Int Ø=12; Int D=6; Ø=16
CS04	● ●	L=20; Int Ø=12; Int D=6; Ø=16
CS05	● ●	L=14; Ø=16
CS05-3	● ●	L=15; Ø=16
CS06	● ●	L=20; Ø=16
CS07	● ●	L=28; Ø=16
CS08	● ●	L=12; Ø=12
CS08-3	● ●	L=16; Ø=16
CS09	●	L=17; Ø=16
CS11	● ●	L=36; Ø=18
CS11-3	● ● ●	L=37; Ø=18
CS12	●	H=28; D=14.6; Ø=16

Item code:	Allen key:	Dimensions:
CS12-3	● ●	H=27; D=26; Ø=16
CS13	● ●	L=21.5; Ø=16
CS13-3	● ●	L=23.5; Ø=16
CS21	● ●	L=64; Ø=16
CS21-3	● ●	L=64; Ø=16
CS22	●	H=28; D=21.2; Ø=16
CS23	● ●	L=35; Ø=16
CS23-3	● ●	L=37; Ø=16
CWF	●	3m cable; projects 40 from wall; floor fitting Ø=15
CWW	●	3m cable; projects 40 from wall; fitting plate Ø=38
HDS		D=15; Ø=50
HR10-3	●	L=790; Ø=10
KC2-CG05	● ●	Top fitting Ø=16; support Ø=23
KC2-CG05-10	● ●	Top fitting Ø=16;
KMDB/SI	●	H=350; D=350; cables/rods project 40mm & 340mm from wall
KMSB-25/SI		H=30; Ø=35; cable fitting 25mm from wall
KMSB/SI		H=60; Ø=60; cable fitting 50mm from wall
KMSB-100/SI		H=110; Ø=110; cable fitting 100mm from wall
P01		Ø=38
P01-PC01		H=15; Ø=38
P02		Ø=12; D=6
P08	●	H=8; Ø=16
PC01/I		L=12; Ø=16
PC31		L=18
PR01-I		L=12; Ø=16
R1000-10		L=1000; Ø=10
R1000P		L=1000; Ø=6
R1500		L=1500; Ø=6
R1500-10		L=1500; Ø=10
R500		L=500; Ø=6
R500-10		L=500; Ø=10
R500P		L=500; Ø=6
RAAS	● ●	Top fitting Ø=15; bottom fitting Ø=18
RAS	●	Top & bottom fitting Ø=18
RAS-10		Top fitting Ø=20; Bottom fitting Ø=22
RB1		1m rod; top fitting Ø=16
RB2		2m rod; top fitting Ø=16
RB3		3m rod; top fitting Ø=16
RBCF3		3m rod; top fitting Ø=16; bottom fitting Ø=15
RBT1		1m rod; top fitting Ø=16
RBT2		2m rod; top fitting Ø=16
RBT3		3m rod; top fitting Ø=16
RBTf3		3m rod; top fitting Ø=16; bottom fitting Ø=15
RC10-6	●	L=25; Ø=10
REC	●	L=16; Ø=12
REC-10		L=15; Ø=10
REC-P/BL		L=17; Ø=8.5
RG01	●	L=25; Ø=16
RG01-10	● ●	L=29; Ø=18
RG02	●	L=36; Ø=16
RG02-10	● ●	L=40; Ø=18
RG05	● ●	L=16; Ø=16
RG06	● ●	L=25; Ø=16
RG06-10	● ●	L=29; Ø=18
RG07	●	L=36; Ø=16
RG07-10	● ●	L=40; Ø=18
RG11	● ●	L=30; Ø=16
RG11-10	● ● ●	L=34; Ø=18
RG12	● ●	L=33; Ø=18
RG12-10	● ● ●	L=37; Ø=18
RG13	● ●	L=30; Ø=18
RG13-10	● ● ●	L=34; Ø=18
RG14-10	● ●	L=29; Ø=20.5
RG21	● ●	L=46; Ø=16
RG21-10	● ● ●	L=68; Ø=16
RG22	● ●	L=52; Ø=18
RG22-10	● ● ●	L=56; Ø=18

Item code:	Allen key:	Dimensions:
RG23	● ●	L=46; Ø=18
RG23-10	● ● ●	L=50; Ø=18
RGN01	●	L=25; Ø=16
RH01	●	L=19; Ø=16
RH01-10	●	L=23; Ø=18
RH02	●	L=24; Ø=16
RH02-10	●	L=28; Ø=18
RP	●	Ø=18
RPA	● ●	Ø=15
RR01	● ●	L=31; Ø=16
RR01-10	● ●	L=40; Ø=18
RR01-3/10	● ● ●	L=33; Ø=18
RR01-3/6	● ● ●	L=29; Ø=16
RR01-6/10	● ●	L=56; Ø=18
RS		Ø=18
RS01	●	D=11; Ø=16
RS03	● ●	L=17.5; Int Ø=12; Int D=6; Ø=16
RS03-10	● ●	L=22; Ø=18
RS04	● ●	L=21; Int Ø=12; Int D=6; Ø=16
RS04-10	● ●	L=26; Ø=18
RS05	● ●	L=17; Ø=16
RS05-10	● ●	L=22; Ø=18
RS06	● ●	L=20; Ø=16
RS06-10	● ●	L=26; Ø=18
RS08	● ●	L=18; Ø=16
RS-10		L=22; Ø=20
RS11	● ●	L=39; Ø=16
RS11-10	● ●	L=43; Ø=18
RS12	●	H=28; D=18.1; Ø=16
RS12-10	● ●	L=20; Ø=18
RS13	● ●	L=25; Ø=16
RS13-10	● ●	L=30; Ø=18
RS21	● ●	L=64; Ø=16
RS21-10	● ●	L=68; Ø=18
RS22	● ●	L=30; D=24.2; Ø=16
RS23	● ●	L=38; Ø=16
RS23-10	● ●	L=38; Ø=18
RSA	●	Ø=15
WM01	● ●	L=30
WM02	● ●	L=30
WM03	●	L=16
WM04	●	L=16
WM05-13	●	L=25; Ø=16
WM05L-20	●	L=40; Ø=16
WM06		L=19; Ø=16
WM07	●	L=28; Ø=16
WM08	●	L=32; Ø=16
WM09	● ●	L=31; Ø=16
WM10	●	L=39; Ø=16; 24mm from wall
WM11	● ●	L=31; Ø=16
WM11-10	● ●	L=36; Ø=18
WM11L-10	● ●	L=59; Ø=18
WM12	●	L=20; Ø=12
WM15	●	L=25; Ø=25
WM16	●	L=50; Ø=25
WM17	●	L=75; Ø=25
WM18	●	L=25; Ø=16
WM19		Ø=16
WM20	●	Ø=25; D=5.5
WMS-2		D=2
WMS-3		D=3

ALLEN KEYS:
To see which allen key each component requires, check the colour code in the list above against the grid below:

AK1.5	1.5mm	●
AK2.0	2.0mm	●
AK2.5	2.5mm	●
AK3.0	3.0mm	●
AK4.0	4.0mm	●
AK5.0	5.0mm	●
AK6.0	6.0mm	●

create the perfect display for

Wall mounted...

Spies Hecker gratefully acknowledges the support of the following companies:



W&G Mechanical Services Co. Ltd
INCORPORATING GARMAT UK.
SPRAYBOOTH AND BODYSHOP EQUIPMENT SPECIALISTS

3M

Innovation • Experience • Quality
minden SATA FESTO

Farécla
The Simple Solution to Paintwork Rectification



Signage suspended from the ceiling...



Floor-to-ceiling creativity...



Versatile cable and rod systems that allow you to create exactly the display you want.

you...

Freestanding displays



Add low voltage lighting



Add movement...

and watch your sales increase



Floating multi-media presentations...



The very latest digital displays will add sound and movement to your displays...and increase sales too...

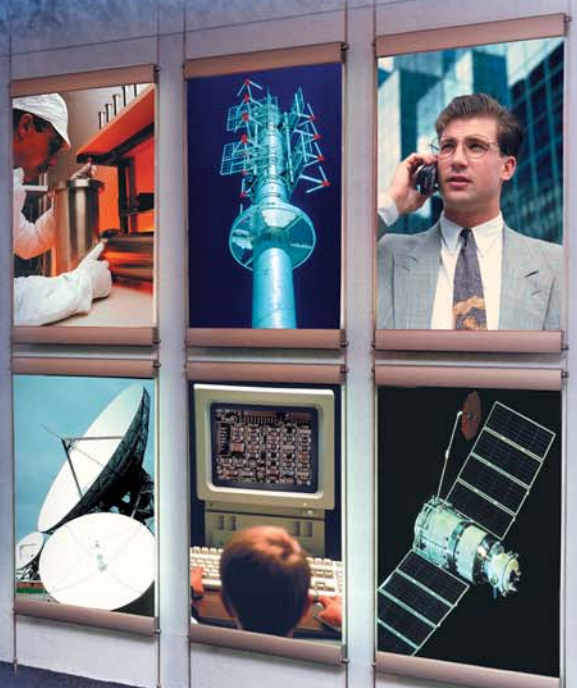
Add flexibility to your display with channel...



Incredibly slim, bright light boxes create maximum impact...



Ultra-bright, slim light boxes can be suspended or wall mounted... used on their own or combined with other displays...





DISPLAY EXHIBITION
& SHOP EQUIPMENT

John Ellis Shop Equipment Limited

TEL: 01223 892283 FAX: 01223 891572

johnellis@shopequip.co.uk

www.shopequip.co.uk